



Dry / Steel	Internal Dimensions (mm)			Weight (kg)			Volume (m ³)
	Type / Size	Length	Width	Height	Max. Gross	Tare	Max. Payload
20" std 20' x 8' x 8' 6"	5,896	2,350	2,385	27,000	2,150	24,850	33
40" std 40' x 8' x 8' 6"	12,035	2,350	2,393	32,500	3,700	28,800	67
40" high cube 40' x 8' x 9'6"	12,035	2,350	2,697	34,000	3,800	30,200	76



Open Top	Internal Dimensions (mm)			Weight (kg)			Volume (m ³)
	Type / Size	Length	Width	Height	Max. Gross	Tare	Max. Payload
20" open top 20' x 8' x 8' 6"	5,919	2,340	2,385	24,000	2,177	21,823	32
40" open top 40' x 8' x 8' 6"	12,043	2,338	2,393	30,480	4,300	26,180	64



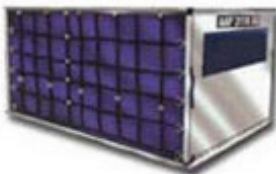
Flat rack / Steel	Internal Dimensions (mm)			Weight (kg) Type		
	Type / Size	Length	Width	Height	Max. Gross	Tare
20' collapsible 20' x 8' x 8' 6"	5,966	2,418	2,286	30,480	2,970	27,510
20' fixed-corner 20' x 8' x 8' 6"	5,935	2,398	2,327	24,000	2,560	21,440
40' fixed-corner 40' x 8' x 8' 6"	12,080	2,438	2,103	30,480	5,480	25,000



Reefer / Aluminium	Internal Dimensions (mm)			Weight (kg)			Volume (m ³)
	Type / Size	Length	Width	Height	Max. Gross	Tare	Max. Payload
20" std 20' x 8' x 8' 6"	5,430	2,286	2,155	27,000	2,750	24,250	26,8
40" std 40' x 8' x 8' 6"	11,577	2,294	2,110	32,500	3,900	28,600	56,1

AIR FREIGHT

LD - 9



Aircraft Types: All 747's & 767 & AB3	
Length:	3020 mm
Width:	2080 mm
Height:	1520 mm
Volume:	10.6 m3
Max Gross Weight:	4626 kg
Rate Class:	5

LD - 1



Aircraft Types: All 747's & 767	
Length :	1470 mm
Width :	1400 mm
Height :	1520 mm
Volume :	4.84 m3
Max Gross Weight :	1587 kg
Rate Class :	8

LD - 7



Aircraft Types: All 747's & 767 & AB3	
Length :	-
Width :	-
Height :	-
Max Gross Weight :	4626 kg
Tare Weight :	110 kg
Rate Class :	2C

LD - 3



Aircraft Types: All 747's & 767 & AB3	
Length :	1470 mm
Width :	1400 mm
Height :	1520 mm
Volume :	4.3 m3
Max Gross Weight :	1587 kg
Rate Class :	8